

TINNED COPPER FLAT BRAID

QQ-W-343E

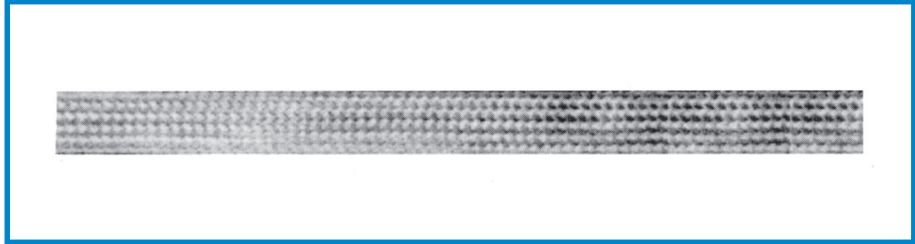
Construction

Description:

- Woven tinned copper braid rolled flat to specific width.
- Each strand meets requirements of Fed. Spec. QQ-W-343E and ASTM-B-33.

Application:

- A tight weave of multi-strand, soft drawn tinned copper wire; tinned copper braid is an ideal shielding material for short run cables providing easy radial termination. In retrofit applications, provides additional shielding efficiency. Tinned copper flat braid, used as a ground strap, provides an excellent low impedance ground path.



CUSTOM CATALOG NUMBER	NOM. FLAT WIDTH	SIZE	NOM. CIRC. MIL AREA	NOMINAL THICKNESS	BRAID CONSTRUCTION			CURRENT	NOMINAL WEIGHT
	INCHES	AWG/MCM	CM	INCHES	AWG OF INDIV. ENDS	CARRIERS	TOTAL NO. OF INDIV. ENDS	AMPS ¹	LBS/MFT
1051	0.025	27	200	0.015	36	8	8	4	1
1052	1/32	24	400	0.020	36	16	16	6	2
1053 ⁽²⁾	3/64	22	600	0.020	36	24	24	7	2
1054	3/32	19	1200	0.020	36	16	48	11	4
1055 ⁽²⁾	1/8	18	1800	0.020	36	24	72	16	6
1056 ⁽²⁾	3/16	15	3000	0.020	36	24	120	25	10
1057 ⁽²⁾	1/4	14	4200	0.030	36	24	168	32	14
1058	3/8	12	7200	0.030	36	48	288	46	25
1059	1/2	10	9600	0.030	36	48	384	53	34
1060 ⁽²⁾	5/8	10	9600	0.030	36	48	384	53	32
1061	3/4	7	20800	0.040	36	48	864	85	65
1062	1	7	20800	0.045	36	48	864	85	77
1063 ⁽²⁾	1-3/8	5	33700	0.050	30	48	336	100	79
1064 ⁽²⁾	1-1/2	3	53064	0.060	30	48	528	150	186
1065	1-3/4	2/0	125424	0.080	30	48	1248	280	451
1066	2	3/0	154368	0.120	30	48	1436	310	512
1067	3	4/0	225000	0.200	30	48	2256	390	775

1 Values shown are for bare cable in free air at 30°C (86°F) and intended as a reference guide only. Actual values will depend on permissible temperature rise, permissible voltage drop and other conditions of service.

2 Meets QQ-B-575B.

Custom Cable Corp.

242 Butler Street • Westbury, New York 11590-3193 • Tel: (516) 334-3600 • Toll Free: (800) 832-3600 • FAX: (516) 334-3989

www.customwireandcable.com • email: sales@customwireandcable.com